

SEE SHEETS 1 AND 3 FOR ADDITIONAL NOTES.

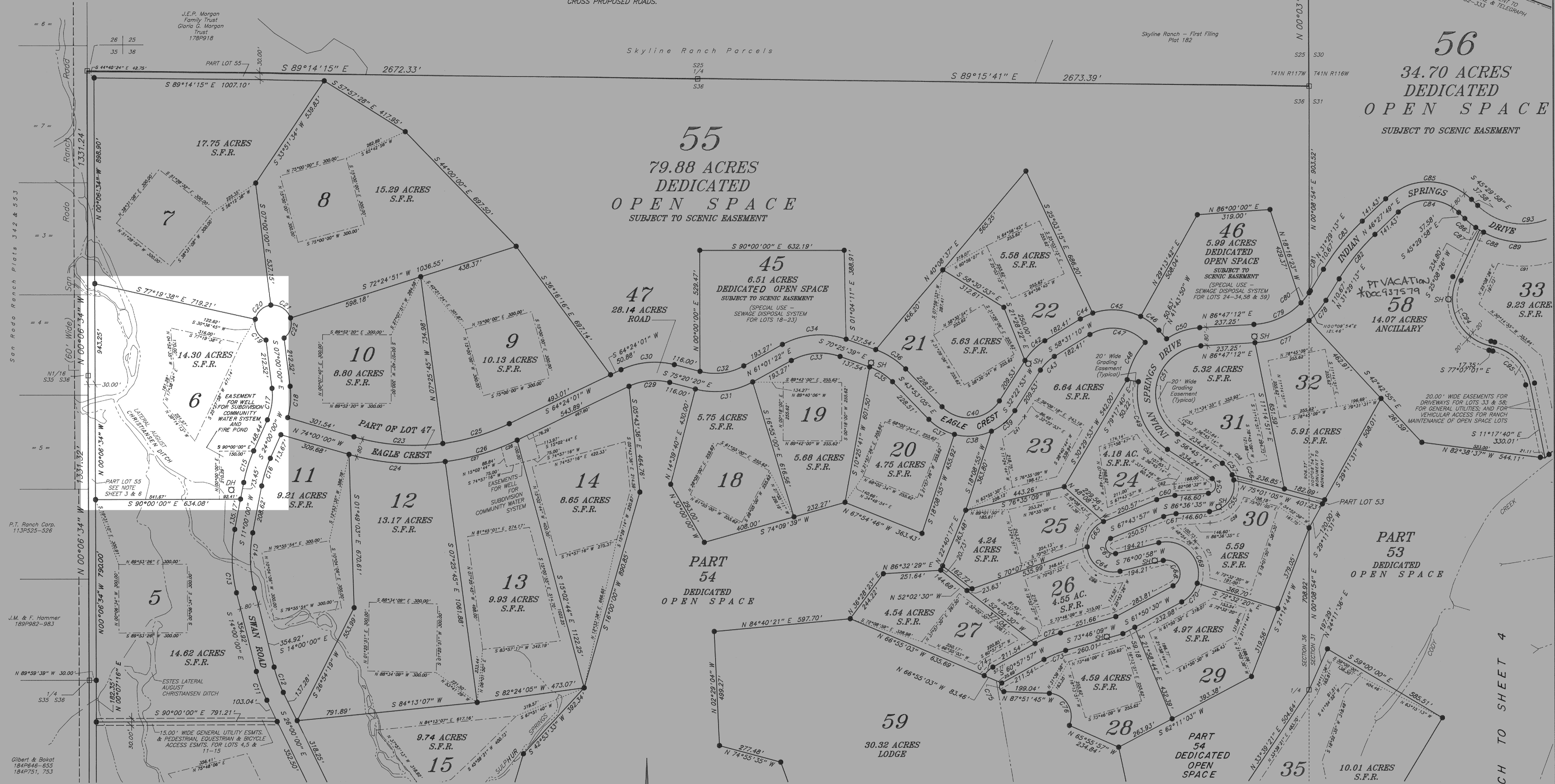
SEE SHEET 8 FOR CURVE & LINE TABLES.

SEE SHEET 6 FOR LEGEND.

PERMIT NUMBERS OF ALL DITCHES SHOWN ON THIS PLAT ARE GIVEN IN THE WATER RIGHTS NOTES ON SHEET 1.

CULVERTS EXIST WHERE ALL STREAMS OR DITCHES CROSS EXISTING ROADS AND WILL BE CONSTRUCTED WHERE STREAMS OR DITCHES CROSS PROPOSED ROADS.

AT THE TIME OF THE PLATTING OF THE FOREGOING SUBDIVISION, THERE ARE NO SURFACE WATER RIGHTS APPURTENANT TO THOSE PARTS OF INDIAN SPRINGS RANCH WHICH LIE WITHIN SECTION 36, T41N, R117W; NO WATER FROM ANY OF THE IRRIGATION DITCHES OR STREAMS WHICH PASS THROUGH SAID SECTION 36 MAY BE USED WITHIN ANY LOT OF THIS SUBDIVISION UNLESS FIRST DULY PERMITTED BY THE STATE ENGINEER'S OFFICE.



Skyline Ranch Parcels

Skyline Ranch - First Filing
Plat 182

56
34.70 ACRES
DEDICATED
OPEN SPACE
SUBJECT TO SCENIC EASEMENT

55
79.88 ACRES
DEDICATED
OPEN SPACE
SUBJECT TO SCENIC EASEMENT

47
28.14 ACRES
ROAD

45
6.51 ACRES
DEDICATED OPEN SPACE
SUBJECT TO SCENIC EASEMENT
(SPECIAL USE -
SEWAGE DISPOSAL SYSTEM
FOR LOTS 18-23)

21
5.63 ACRES
S.F.R.

22
5.58 ACRES
S.F.R.

46
5.99 ACRES
DEDICATED
OPEN SPACE
SUBJECT TO
SCENIC EASEMENT
(SPECIAL USE -
SEWAGE DISPOSAL SYSTEM
FOR LOTS 24-34, 58 & 59)

46
5.99 ACRES
DEDICATED
OPEN SPACE
SUBJECT TO
SCENIC EASEMENT
(SPECIAL USE -
SEWAGE DISPOSAL SYSTEM
FOR LOTS 24-34, 58 & 59)

58
14.07 ACRES
ANCILLARY

33
9.23 ACRES
S.F.R.

7
17.75 ACRES
S.F.R.

8
15.29 ACRES
S.F.R.

6
14.30 ACRES
S.F.R.

10
8.80 ACRES
S.F.R.

10
10.13 ACRES
S.F.R.

11
9.21 ACRES
S.F.R.

12
13.17 ACRES
S.F.R.

14
8.65 ACRES
S.F.R.

18
5.75 ACRES
S.F.R.

19
5.68 ACRES
S.F.R.

20
4.75 ACRES
S.F.R.

23
6.64 ACRES
S.F.R.

24
4.18 AC.
S.F.R.

31
5.91 ACRES
S.F.R.

32
5.91 ACRES
S.F.R.

5
14.62 ACRES
S.F.R.

13
9.93 ACRES
S.F.R.

15
9.74 ACRES
S.F.R.

18
5.75 ACRES
S.F.R.

20
4.75 ACRES
S.F.R.

23
6.64 ACRES
S.F.R.

24
4.18 AC.
S.F.R.

26
4.55 AC.
S.F.R.

30
5.59 ACRES
S.F.R.

35
10.01 ACRES
S.F.R.

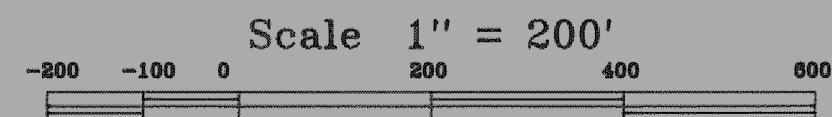
PART 54
DEDICATED
OPEN SPACE

59
30.32 ACRES
LODGE

PART 53
DEDICATED
OPEN SPACE

MATCH TO SHEET 6

MATCH TO SHEET 4



Scale 1" = 200'

FINAL PLAT AND MASTER PLAN FOR PUD
INDIAN SPRINGS RANCH
BEING
SECTION 36 T41N R117W
AND PART OF
SECTION 31 & SW1/4 SECTION 30
T41N R116W
TETON COUNTY, WYOMING
Plat Detail - Northwest Corner
SHEET 5 OF 8